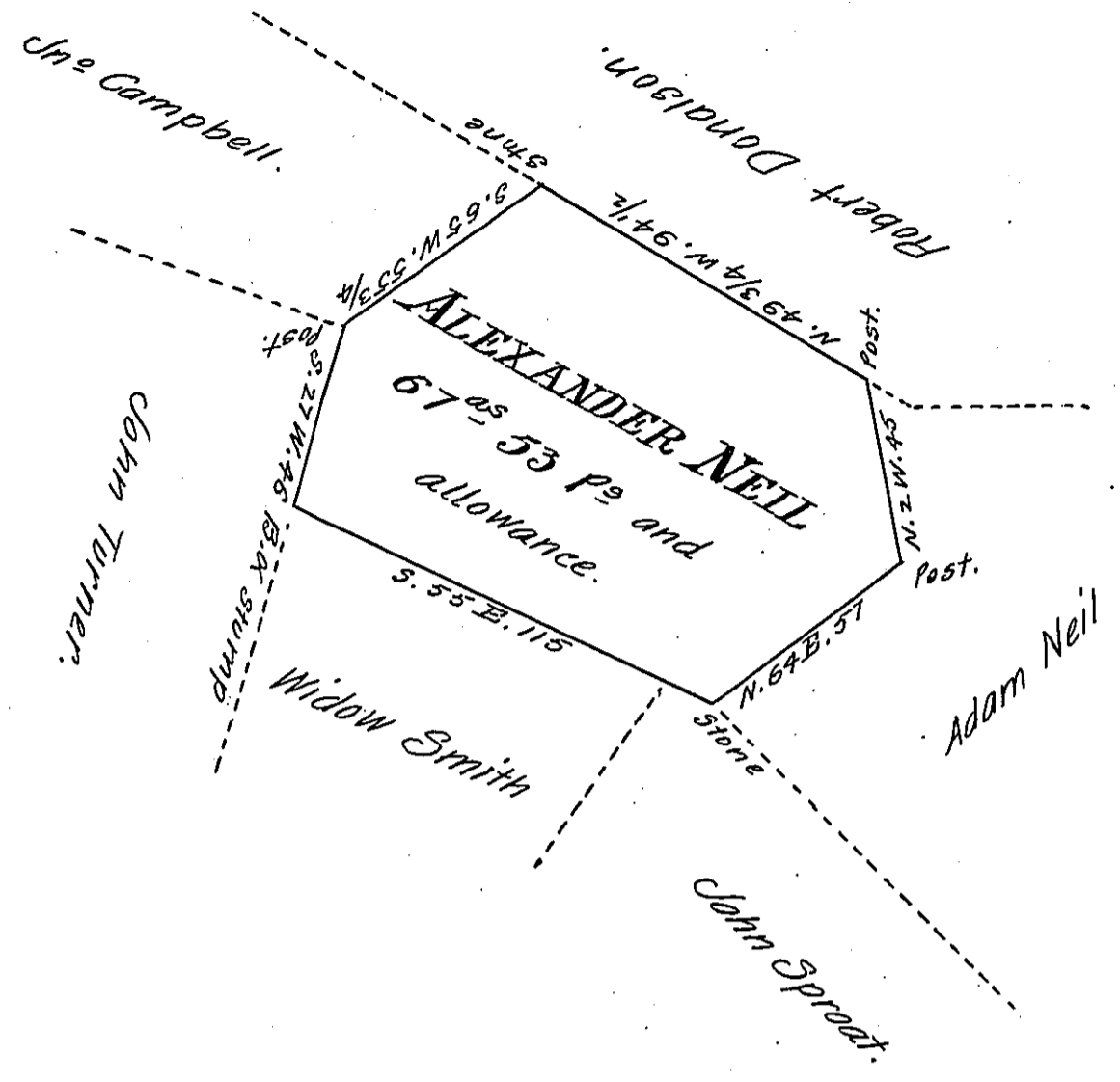


FORM No. 1.



A Draught of a tract of Land situate in Dickinson Township Cumberland County Containing 67^{ac} 53 P^s and the usual allowance of six P. Cent for roads &c. It being part of a larger tract of 158^{ac} 60 P^s and allowance originally surveyed to Alexander Neil in pursuance of a warrant dated the 28th November 1771. Surveyed and Divided off 18th November 1806.

Wm Wheeler D.S.

To Sam^l Cochran Esq^r S.G.

IN TESTIMONY that the above is a copy of the original remaining on file in the Department of Internal Affairs of Pennsylvania, made conformably to an Act of Assembly approved the 16th day of February, 1833, I have hereunto set my Hand and caused the Seal of said Department to be affixed at Harrisburg, this nineteenth day of April 1906.

James R. [Signature]
Secretary of Internal Affairs.